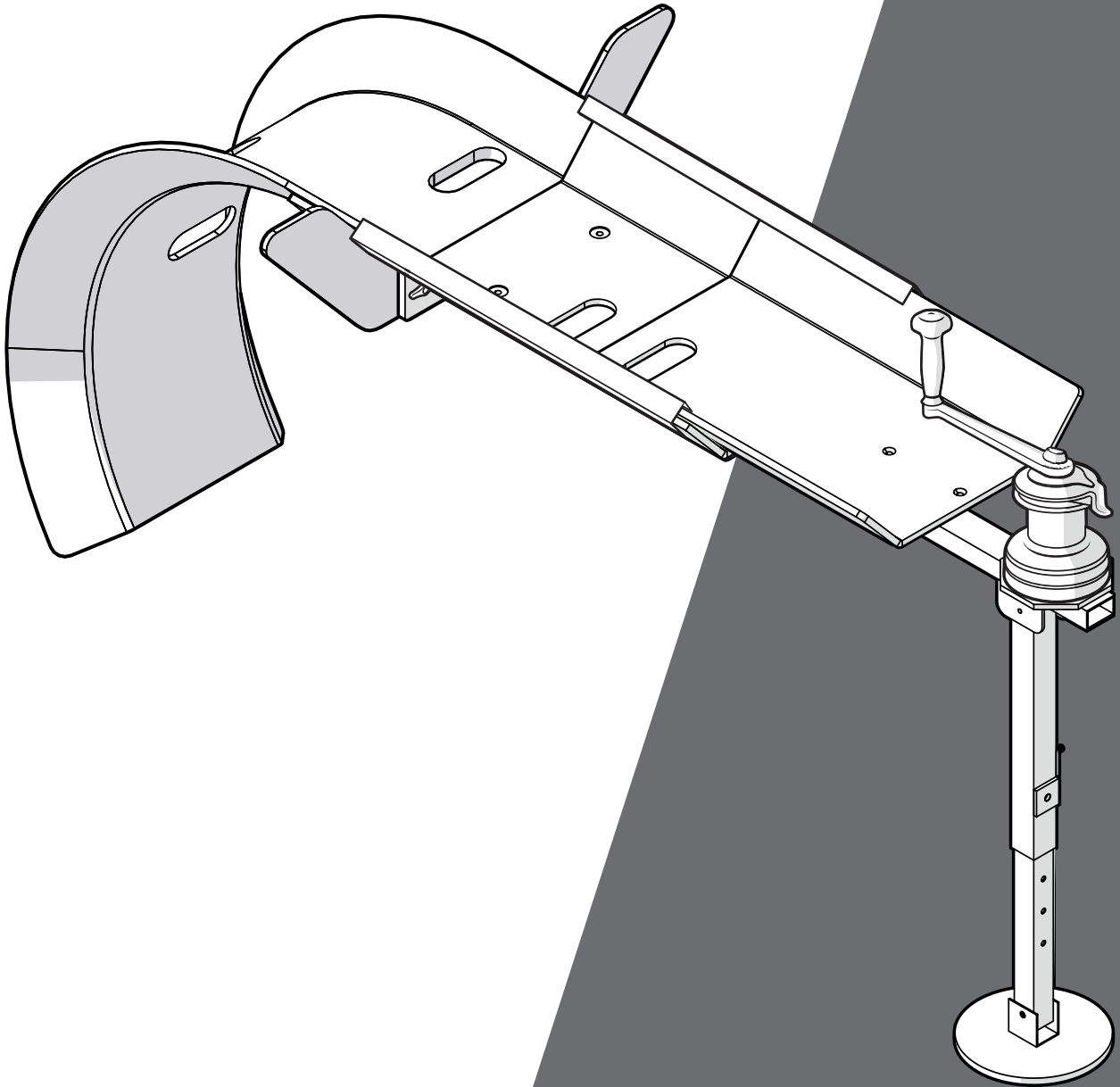


# Roofac Rescue Slide

Version 0, 2022-02-21.



ROOFAC

**Installation Manual**



# Table of contents

1.	Overview .....	4
2.	General information.....	5
3.	Safety .....	6
4.	Install the Roofac Rescue Slide.....	7

# 1. Overview

A Curve assembly

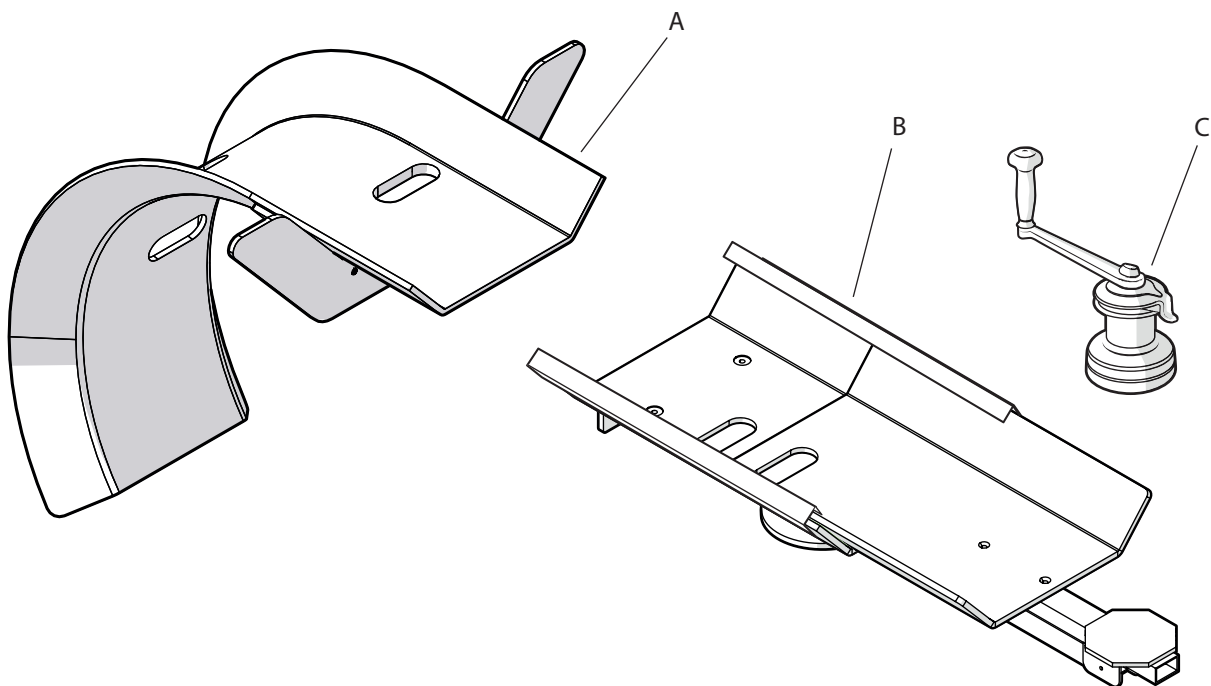
---

B Section assembly

---

C Winch

---



## 2. General information

### 3. Safety – read this before installing the Roofac Rescue Slide

#### Warnings

- ⚠ **WARNING.** A person who installs the Roofac Rescue Slide must know the EU and local regulations regarding personal fall protection equipment, PPE, if it is being used together with the rescue slide. If a person who installs the Roofac Rescue Slide does not know the regulations regarding PPE, there is a risk of incorrect use of the PPE. If a person uses PPE incorrectly, there is a risk of personal injury or death.
- ⚠ **WARNING.** A person who installs the Roofac Rescue Slide must be educated in rescue situations in confined spaces, EN 363. If a person who installs the Roofac Rescue Slide is not educated in rescue situations in confined spaces, there is a risk of personal injury or death.
- ⚠ **WARNING.** Always read the Roofac Rescue Slide instruction before installing the Roofac Rescue Slide. If the person who installs the Roofac Rescue Slide has not read the Roofac Rescue Slide instruction, there is a risk of components being put together incorrectly. If the components are put together incorrectly, there is a risk that the Roofac Rescue Slide is not stable. If the Roofac Rescue Slide is not stable, there is a risk of personal injury or death.
- ⚠ **WARNING.** Never use components other than the components included in the Roofac Rescue Slide package when installing the Roofac Rescue Slide. If a component not manufactured by Roofac is put together with a component included in the Roofac Rescue Slide package, there is a risk that the Roofac Rescue Slide will work incorrectly. If the Roofac Rescue Slide works incorrectly, there is a risk of personal injury or death.
- ⚠ **WARNING.** Only use Roofac Rescue Slide components that are not damaged and that are in operational condition. If the Roofac Rescue Slide components are damaged or not in operational condition, there is a risk that the Roofac Rescue Slide will work incorrectly. If the Roofac Rescue Slide works incorrectly, there is a risk of personal injury or death.

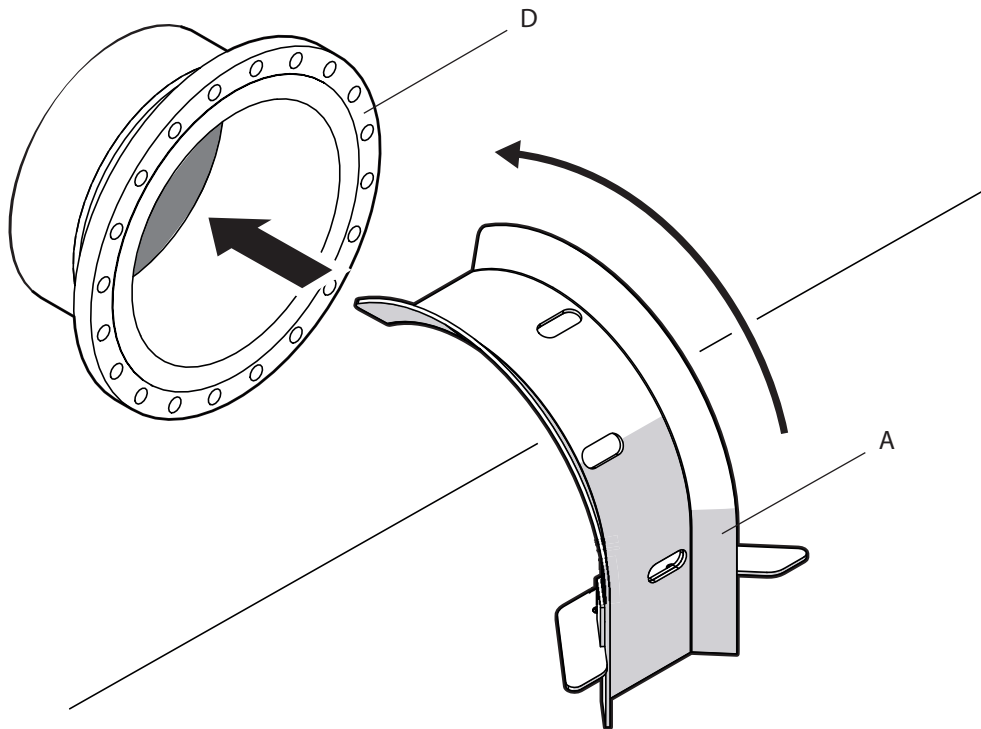
## 4. Install the Roofac Rescue Slide

### ⚠ Before installation.

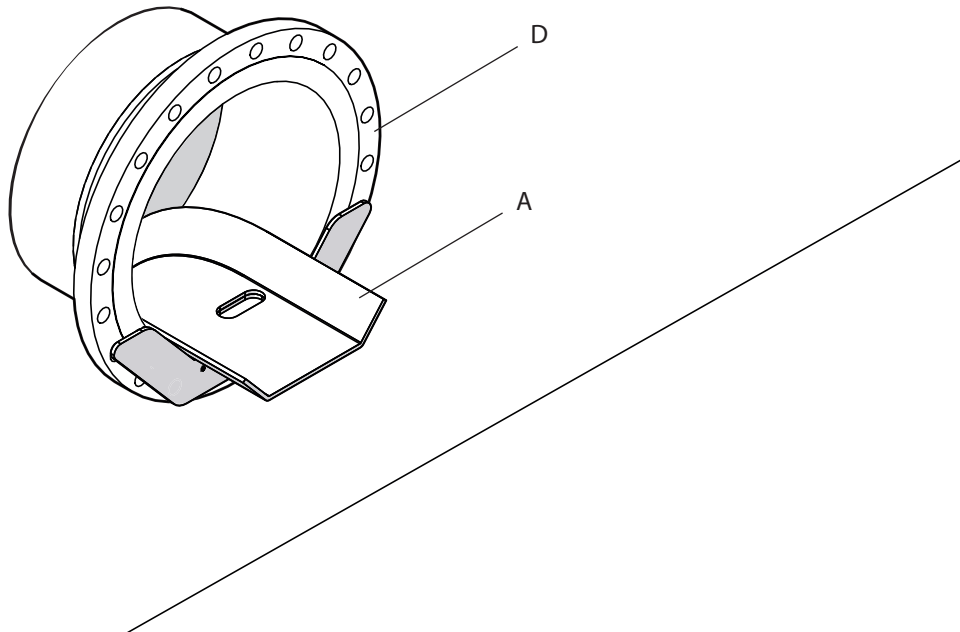
- » Make sure that the curve assembly (A) is not damaged.
- » Make sure that the curve assembly (A) is clean.
- » Make sure that the manhole (C) is clean.

⚠ **WARNING.** A person who installs the Roofac Rescue Slide must know the EU and local regulations regarding personal fall protection equipment, PPE if it is being used together with the rescue slide. If a person who installs the Roofac Rescue Slide does not know the regulations regarding PPE, there is a risk of incorrect use of the PPE. If a person uses PPE incorrectly, there is a risk of personal injury or death.

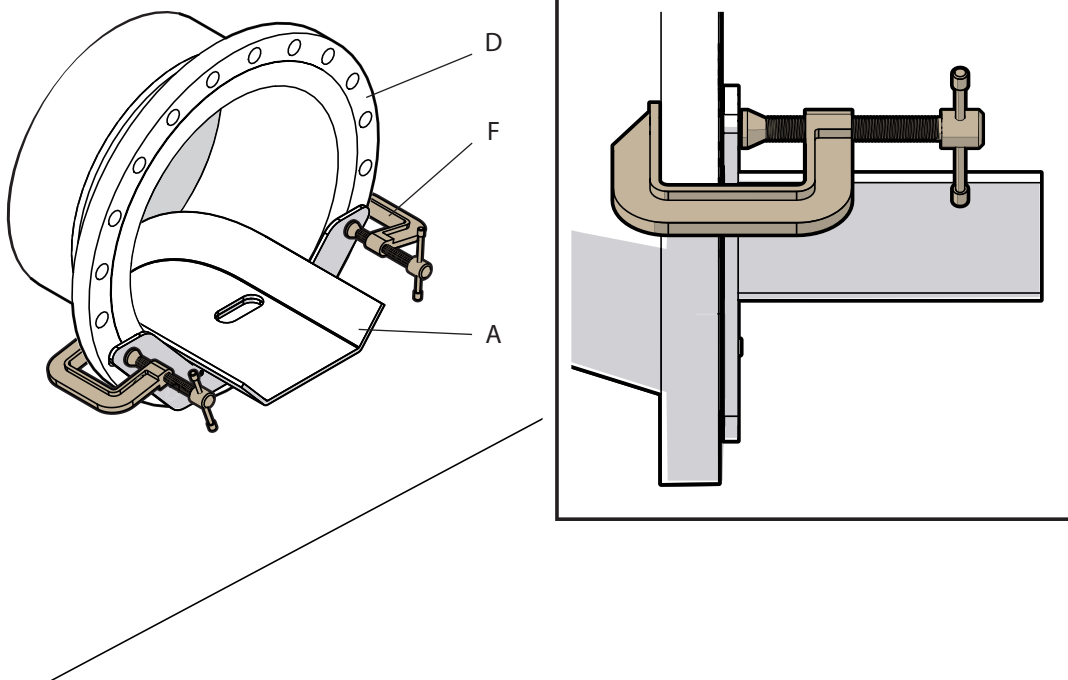
1. Put the curve assembly (A) through the manhole (D) from the inside of the cistern.



1. Make sure the curve assembly (A) is horizontally level in the manhole (D).

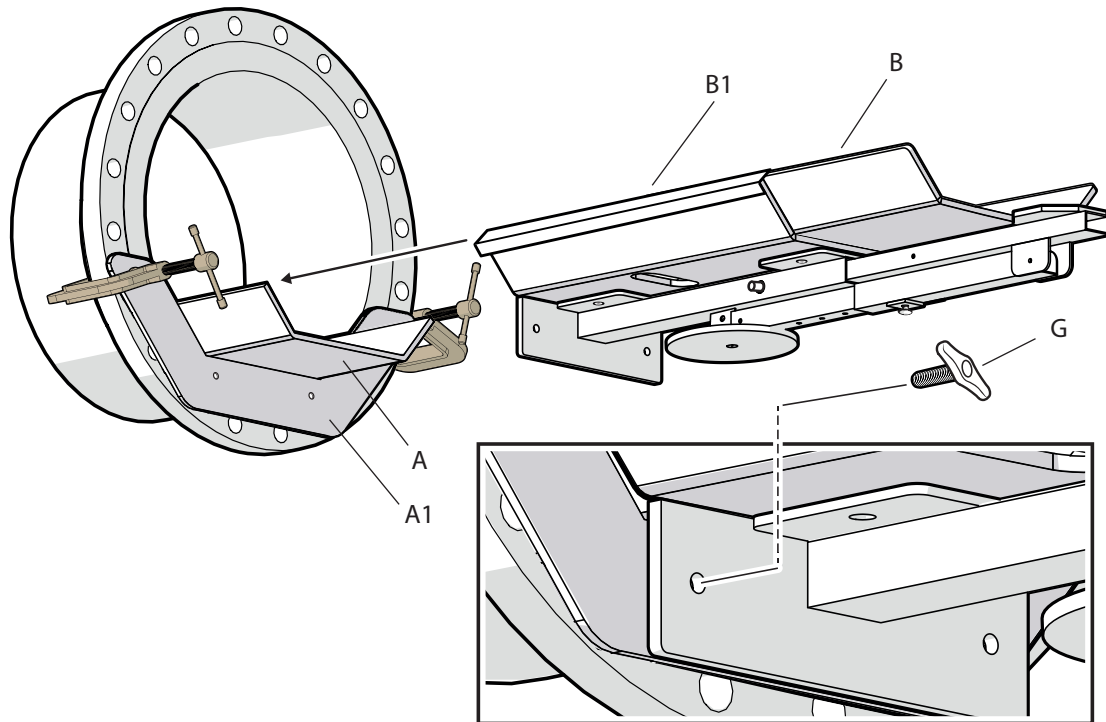


2. Use two C-clamps (F) included in the Roofac Rescue Slide package to secure the curve assembly (A) to the manhole (D).

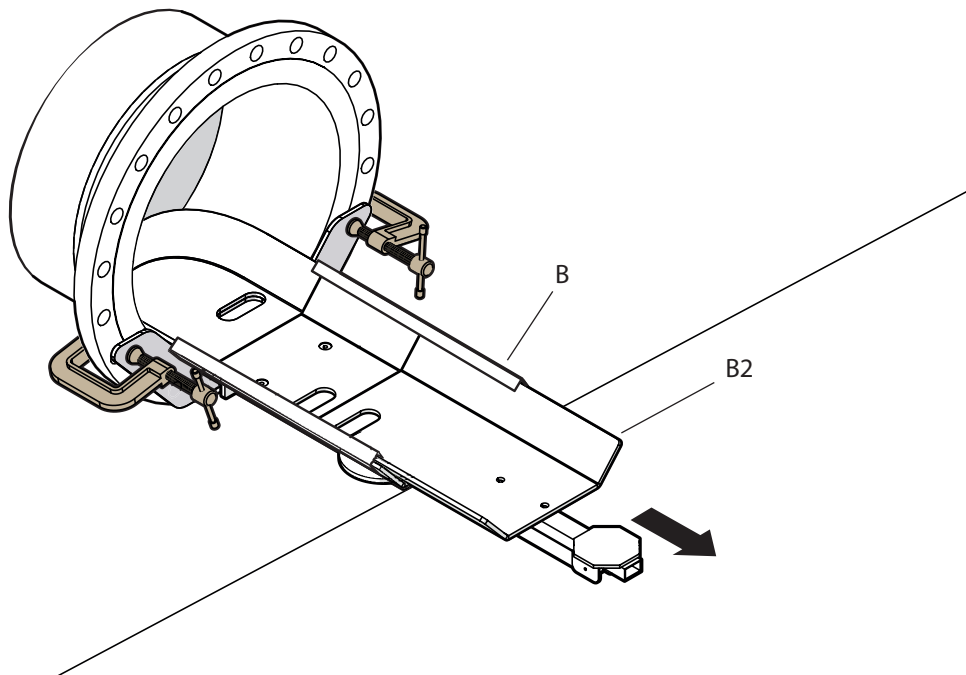




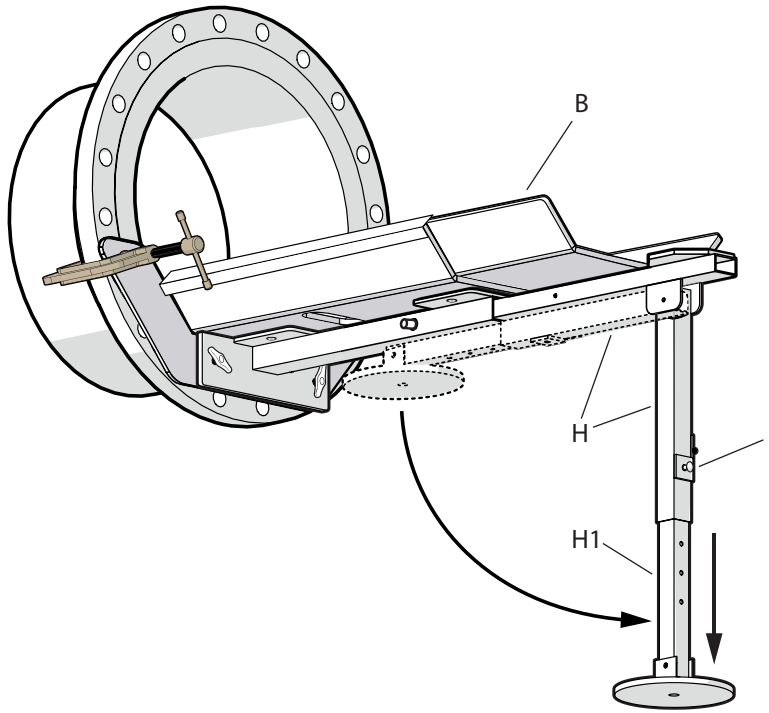
1. Fit the cover plates (B1) on the section assembly (B) over the curve assembly (A) and push the section assembly (B) all the way in to the wall plate (A1) on the curve assembly (A).
2. Use the screws (G) to attach the section assembly (B) to the wall plate (A1).



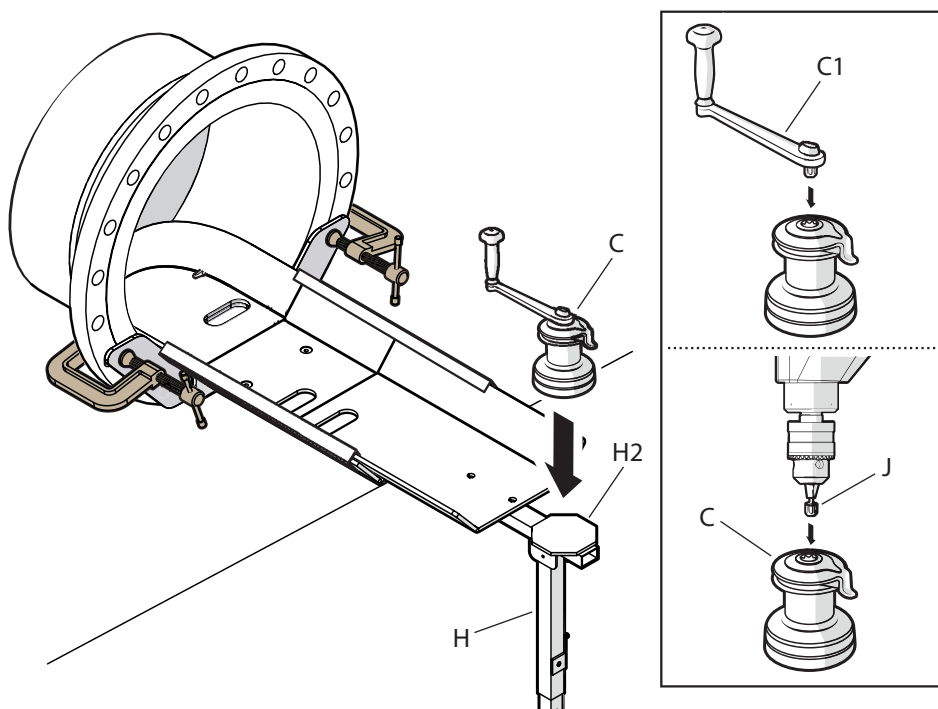
3. Pull the end section (B2) out of the section assembly (B).



4. Fold down the stand (H) underneath the section assembly (B).
5. Remove the cotter pin (I) from the stand (H) and lower the inner leg of the stand (H1) to required length.
6. Install the cotter pin (I) again.



7. Install the winch (C) on the plate (H2) on the stand (H). See manufacturers' manual for installation.
8. As an alternative to the winch handle (C1), a drill with an appropriate bit (J) can be used to turn the winch (C).



9. The rescue slide is ready for use.

